

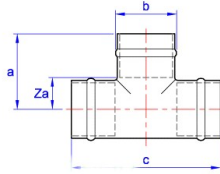
# YP24IM Slip Adaptor tee, slip pattern.

Adaptor tee, slip pattern. All ends for copper, imperial to metric branch.



## GENERAL INFORMATION

Size	Pattern No.	Box Qty	Code	Barcode	Price (£) ex VAT
1/2" x 1/2" x 15mm	YP24IM Slip	5	08470	5022050084705	£9.34
3/4" x 3/4" x 22mm	YP24IM Slip	5	08471	5022050084712	£15.79



## DIMENSIONS (mm)

Code	Description	a	b	c	Za
08470	1/2" x 1/2" x 15mm YP24IM slip	24	18	47	9
08471	1/2" x 1/2" x 22mm YP24IM slip	34	26	64	15

## PRESSURE & TEMPERATURE

YORKSHIRE POTABLE PERFORMANCE WHEN CORRECTLY ASSEMBLED WITH COPPER TUBE TO BS EN 1057

Service temperature

Size	-40° C (Min)	30° C	65° C	110° C (Max)
6mm to 54mm	16 bar	16 bar	10 bar	6 bar
67mm	10 bar	10 bar	6 bar	4 bar

## GUARANTEE

### Pegler Yorkshire 25 Year Guarantee - Terms and Conditions

Products are subject to a 25 year guarantee that is between Pegler Yorkshire and the final purchaser of the product.

The guarantee is subject to proof of purchase being supplied.

This guarantee does not affect any statutory rights the consumer may have in law.

The guarantee covers manufacturing or material defects when installed in accordance with our instructions on specified tube materials and applications, and does not cover parts subject to normal wear and tear.

This product range has been designed for the use of homeowners, domestic and commercial applications and therefore the Guarantee is subject to the product being properly selected for their intended service conditions.

The guarantee is not applicable where the product is fitted contrary to the conditions in the fitting instructions.

This is reinforced where valves are covered by the European Pressure Equipment Directive (PED97/23/EC) where Installation, Operating and Maintenance Instructions are supplied with each product and/or carton.

Provided it is installed correctly and receives adequate preventative maintenance it should give years of trouble-free service.

Abusive behaviour and accidental damage to the product are not covered by this guarantee.

The extent of this liability is limited to the cost of the replacement of the defective item and not to installation or consequential damages.

## APPROVALS



[BSI](http://www.bsi.com)



[WRAS](http://www.wras.co.uk)